



# LADIES READY TO WEAR AW18

LADIES Catwalk analysis - AUTUMN/WINTER 2018

# COLOUR VITAMIN-C



**Halpern**



**Moschino**



**Adrienne Landau**



**R13**

These vibrant oranges are a huge hit for AW18 when it comes to adding a pop of colour

# COLOUR TRUE BLUE



**Delpozo**



**Arthur Arbesser**



**Mother of Pearl**



**Angel Chen**

Blue is one of next season's biggest colours, trending in a few different shades. The ideal colour for sportswear inspired looks, outerwear pieces and suits.

# COLOUR PRIMARY BLUE



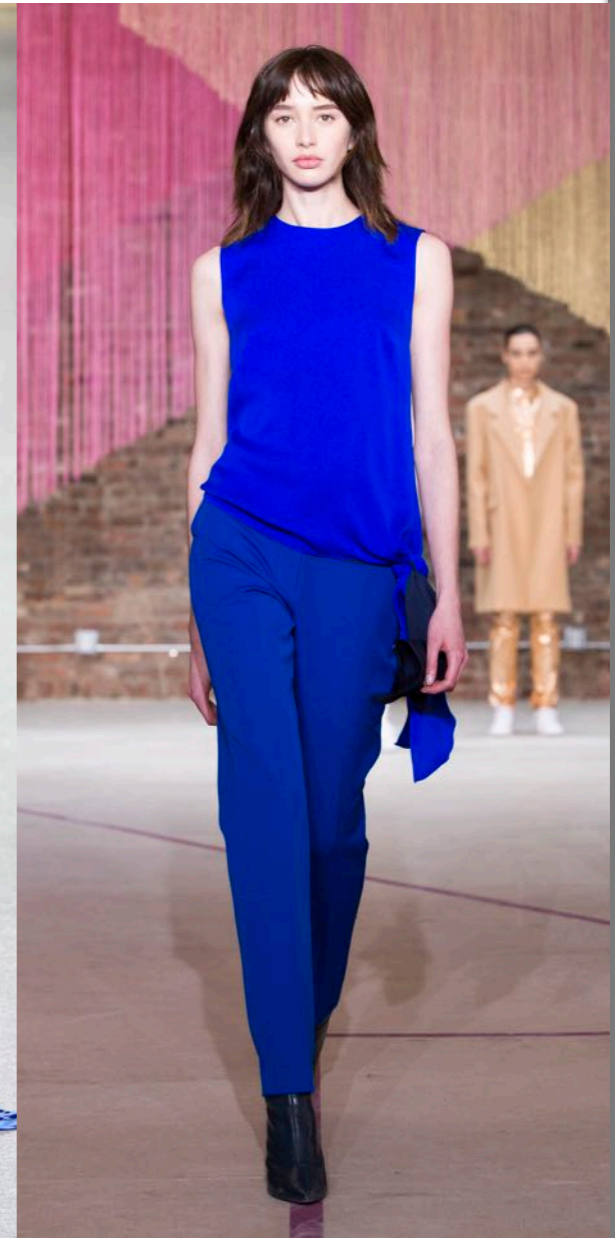
Adam Selman



Marni



Balmain



Milly

Bright primary blue is particularly popular for fabrics with luxe silky and patent finishes.

# COLOUR LILAC LUSTRE



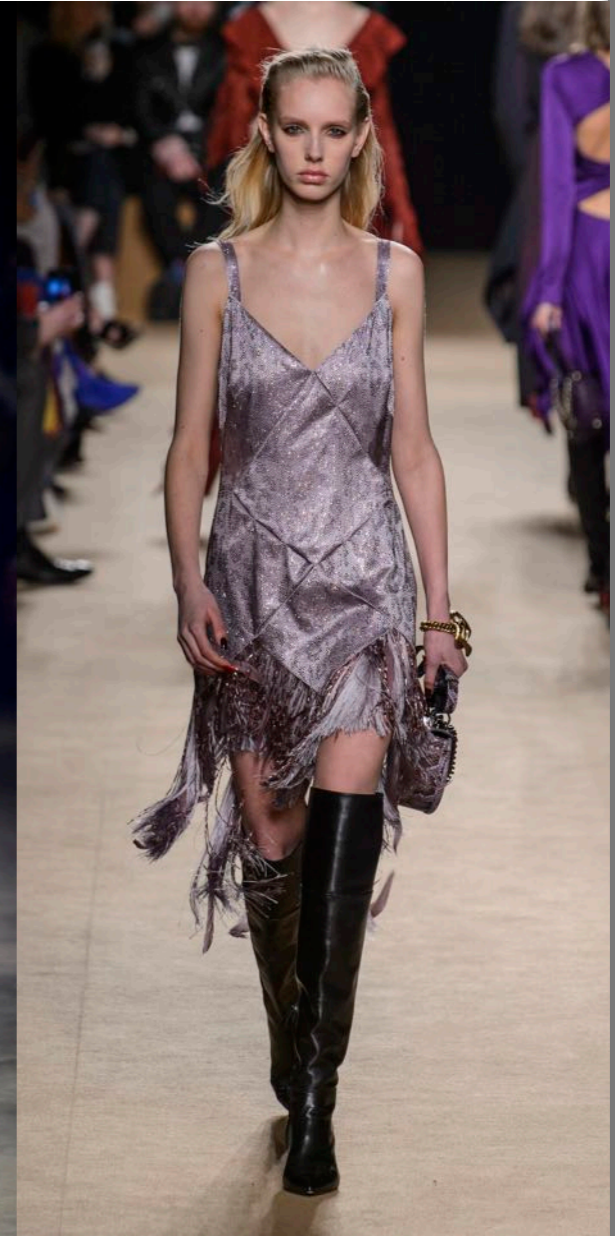
**Adam Selman**



**Cristiano Burani**



**Kenzo**



**Roberto Cavalli**

Feminine lilac is a key shade for dresses and suits with a bit of added sparkle.  
Perfect for opulent Christmas party season dressing.

# COLOUR VINTAGE BLUE



**Christian Pellizzari**



**Off-White**



**Teatum Jones**



**Valentino**

These vintage shade of 1940s inspired blues are classic paired with rich velvet dresses and on tailored outerwear pieces, yet look fresh on abstract silhouettes.

# COLOUR MINT METALLICS



**Each x Other**



**Christian Pellizzari**



**Halpern**



**Attico**

Minty greens and turquoises are essential for AW18 metallics.

# COLOUR PEACHES AND CREAM



**University of Westminster**



**On Off Presents**



**Off-White**



**Balmain**

Muted peach shades are a quirky choice for suits and outerwear, yet elegant and soft looking for floaty dresses and lingerie inspired lace slips.



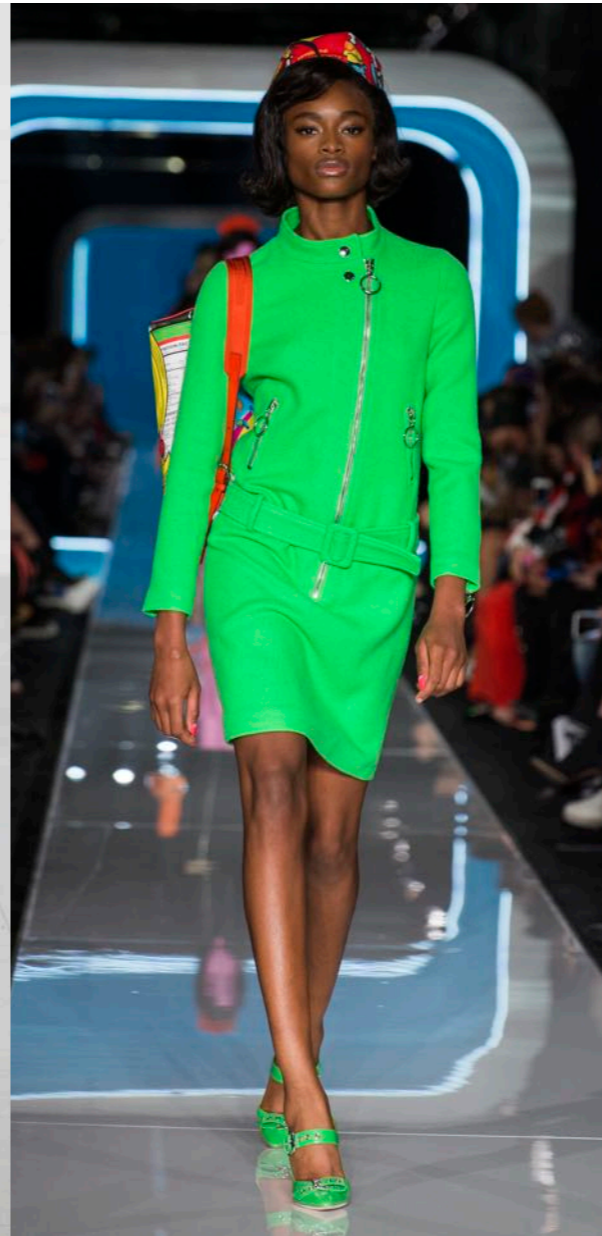
# COLOUR CRAYOLA GREEN



**MSGM**



**Fashion East**



**Moschino**



**Marni**

This bright shade of primary green is the quirkiest way to add a bold pop of colour to Autumn/Winter 2018 looks.

# COLOUR SPEARMINT



**Valentino**



**Arthur Avellano**



**Annakiki**



**Miu Miu**

This spearmint shade works well for outerwear pieces, as seen at Miu Miu.

# COLOUR HOT PINK



**Adam Selman**



**Marni**



**Carolina Herrera**



**Milly**

Bright hot pinks are a perfect colour for sleep party season looks, as well as for adding a quirky bold feel to everyday pieces.

# COLOUR LIPSTICK PINK



**Delpozo**



**Milly**



**Daizy Shely**



**Valentino**

Slightly more muted cosmetic shades of bright pink work well when paired with rich textures such as velvet and faux fur.

# COLOUR PISTACHIO



**University of  
Westminster**



**Kenzo**



**Gucci**



**Valentino**

Pistachio is the on-trend colour that's feminine, yet clean and minimal looking.



**Milly**



**Emilio Pucci**



**Balenciaga**



**Prabal Gurung**

Opulent purple is set to be huge for 2018, so it's no surprise to see it featured head to toe or in key outerwear pieces for next season.

# COLOUR CITRUS DAY GLO



**Balmain**



**Kenzo**



**Prada**



**Jeremy Scott**

Vibrant neon greens and yellows are essential for AW18, particularly for athleisure or party looks. Worn head to toe or as an accent.

LADIES Catwalk analysis - AUTUMN/WINTER 2018

# KEY MOOD FIGURE SKATER



**Attico**



**Kenzo**



**Halpern**



**Ashish**

Taking inspiration from the movie I, Tonya and the winter olympics, these spangled dresses and bodysuits shimmer with rhinestones, rich fabrics and mesh illusions.



# KEY MOOD *ECRU UTILITY*



**R13**



**Prada**



**Off-White**



**Tods**

Utility pieces were spotted frequently in a neutral palette of beige and ecru.

# KEY MOOD *NEO-HISTORICAL*



**Dilara Findikoglu**



**Marques Almeida**



**Isa Arfen**



**Ottolinger**

Corset tops with a historical feel are layered unusually with denim or over the top of suits to give them a fresh modern twist.

# KEY ITEM FAIRISLE KNIT



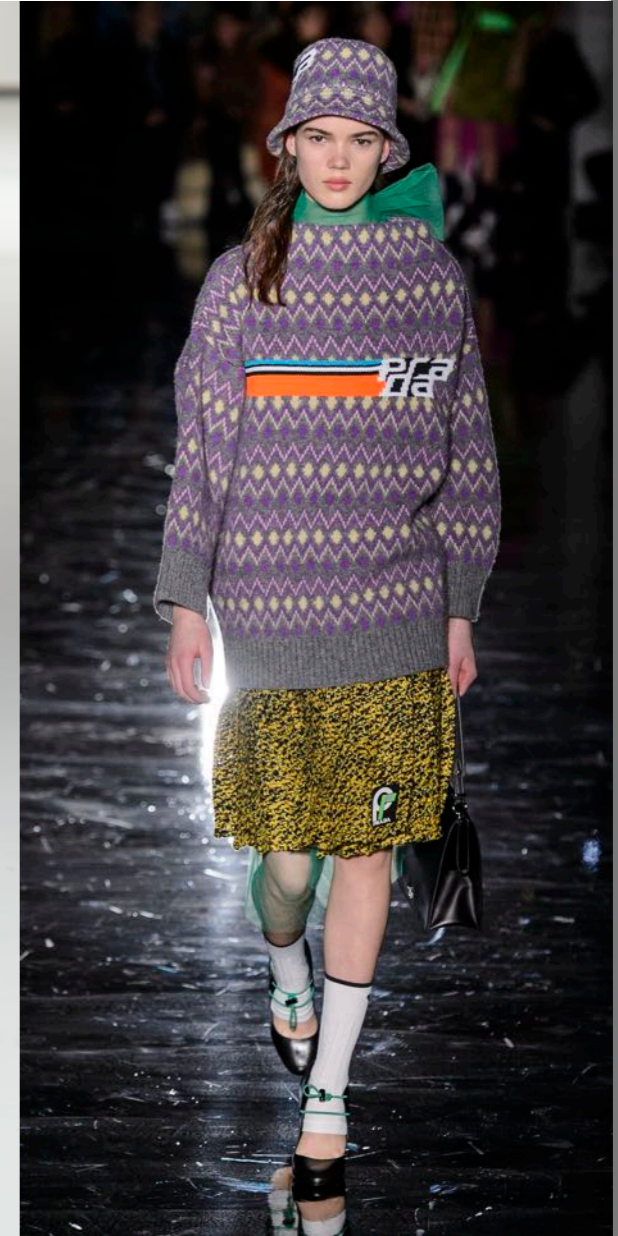
**MSGM**



**Michael Kors**



**Sportmax**



**Prada**

The fair isle jumper is set to be an essential knitwear piece for A/W 18.

# KEY ITEM RED PVC COAT



**MSGM**



**Miu Miu**



**Brognano**



**Cristiano Burani**

PVC coats have been a popular transitional outerwear trend for a couple of seasons now, but AW18 sees pillarbox red as they key colour for this piece.

# KEY ITEM CARDIGAN



**MSGM**



**Junko Shimada**



**Ashley Williams**



**Isa Arfen**

Ladylike cardigans are worn buttoned up in lieu of tops or sweaters. This classic knitwear piece has been reimagined in a fresh way for AW18.

# KEY ITEM LOOSE TOGA DRESS



**Valentino**



**Christopher Kane**



**Halpern**



**Adam Selman**

These one shouldered toga-like dresses are loose fitting and flowing, for an elegant feel.

# KEY ITEM CABLE KNIT LAYERS



**Kenzo**



**Isa Arfen**



**Altuzarra**



**Chloé**

From tabards to slip dresses, cable knit items are being layered up with looks for the coming Autumn/Winter 2018 season.

# KEY DETAIL QUILTING



Prada



MSGM



Off-White



Peter Pilotto

Quilting is a key texture for outerwear as well as skirts and dresses.



# KEY DETAIL PATCHWORK



**University of Westminster**



**Christian Dior**



**Calvin Klein**



**Tom Ford**

Patchworked looks give clothes a crafty, handmade feel, and have been cropping up all over the recent catwalks.

# KEY DETAIL FEATHER



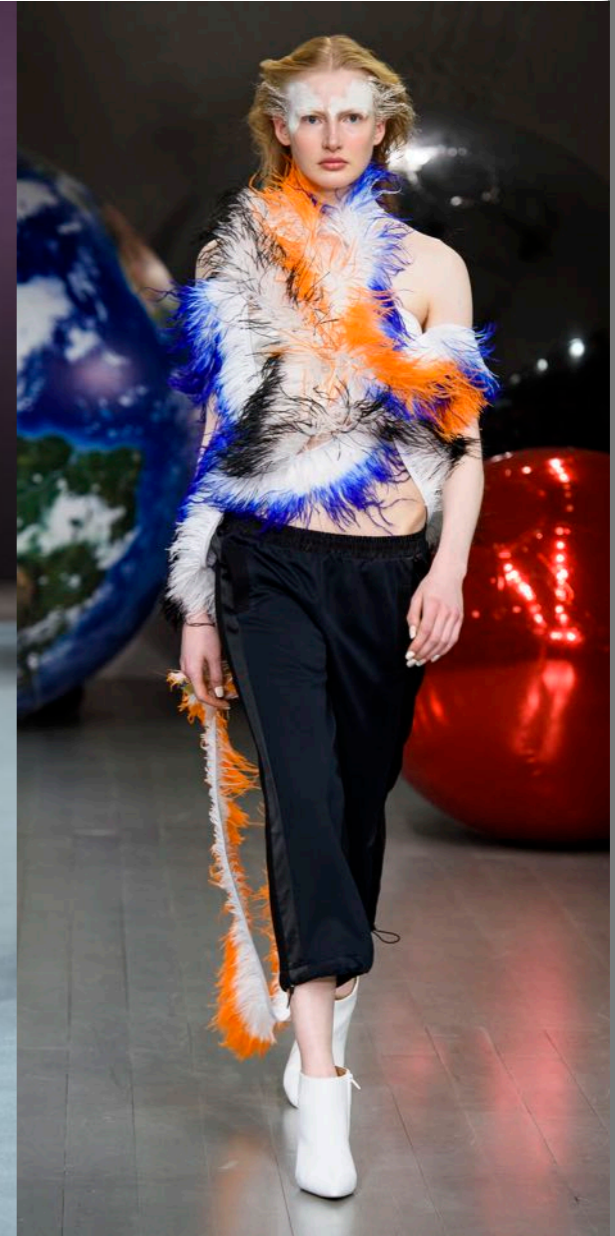
**Valentino**



**Brognano**



**Ashley Williams**



**Fyodor Golan**

Feather trims are perfect for adding rich opulence to AW party season pieces.

# KEY DETAIL ASYMMETRIC NECK



**Off-White**



**Christopher Kane**



**Each x Other**



**Halpern**

The new asymmetric dress shape focusses mostly on the neckline and sleeves.

# KEY DETAIL DISCONNECTED SLEEVE



House of Holland



Halpern



Chloé



Halpern

These sleeves are disconnected at the top to reveal a hint of skin.  
The latest way to wear the ongoing cold shoulder trend.

# KEY DETAIL SPORTY LACE-UP



**Fyodor Golan**



**Sportmax**



**Maryam Nassir Zadeh**



**Chromat**

Lace up details are paired with sporty dresses to create this quirky athleisure feel.

# KEY DETAIL SQUARE NECK



**Valentino**



**Jacquemus**



**Stella McCartney**



**Emilia Wickstead**

The square renaissance inspired neckline is one of the main trends for next season in terms of silhouette. This look has been seen featured by so many designers.

# KEY DETAIL SPLIT DECISION



**Richard Quinn**



**Marni**



**Carolina Herrera**



**Adam Selman**

Dresses are split down the middle, torn between two different clashing colours or prints.

# KEY DETAIL ZIP IT



**Christopher Kane**



**Alexander Wang**



**Creatures of Comfort**



**Christian Siriano**

Zip details are widely featured on leather dresses and sexy party season pieces.



# KEY DETAIL *FRILL FLARE SLEEVE*



**Valentino**



**Roksanda**



**Off-White**



**Andrew Gn**

These flared sleeves are topped off with a frill, for a floaty bohemian feel that's perfect for pretty day dresses as well as in more opulent fabrics for evening wear.

# KEY DETAIL LEG OF MUTTON SLEEVE



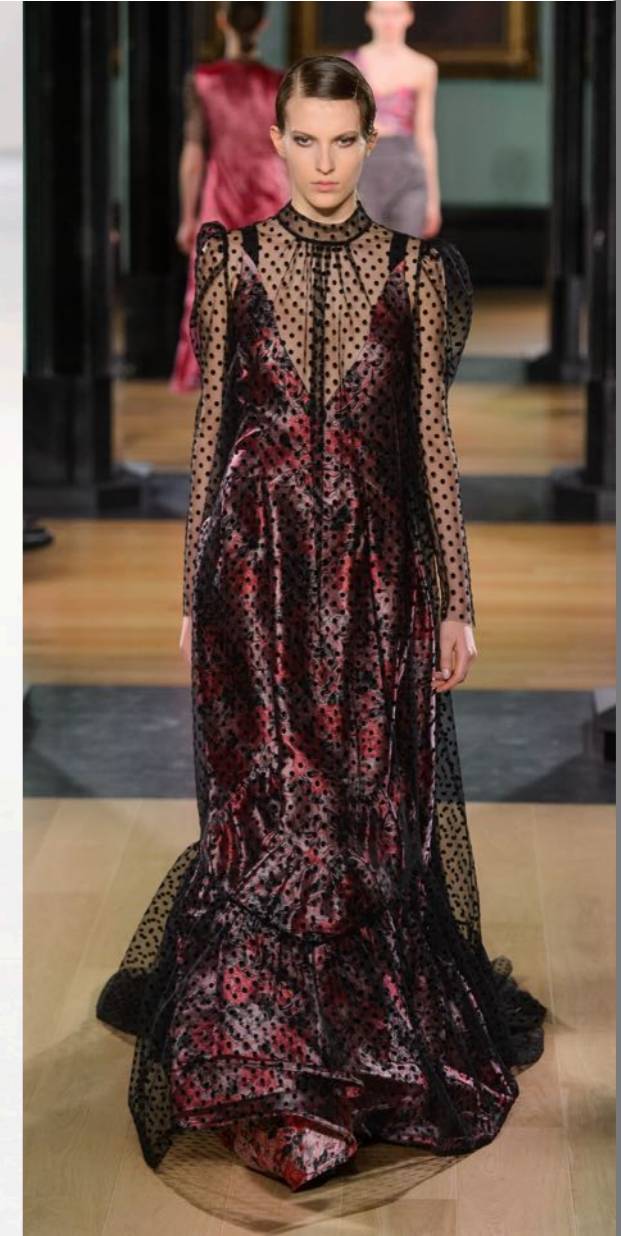
Zimmermann



Etro



Dries Van Noten



Erdem

Puffed at the top and narrow at the wrist, the leg of mutton sleeve is one of Autumn/Winter 2018's key shapes.

# KEY FABRIC METALLIC JACQUARD



**Rahul Mishra**



**Moschino**



**Christopher Kane**



**Andrew GN**

Jacquard fabrics in opulent shimmering metallics are ideal for the christmas season.

# KEY FABRIC VELVET



**Altuzarra**



**Daizy Shely**



**Stella McCartney**



**Erdem**

Rich velvet is often a hit for Autumn Winter. This time, designers paired it with the square neck silhouette or used hints of it with other fabrics, like at Stella McCartney.

# KEY FABRIC **CORDUROY**



**Roland Mouret**



**Rahul Mishra**



**Daizy Shely**



**Ashley Williams**

Corduroy is essential for outerwear and suits - Shown here in soft pastel shades.

# KEY FABRIC *PRETTY MESH LAYER*



**Kenzo**



**Prada**



**Off-White**



**Calvin Klein**

These pretty transparent mesh and chiffon layers are worn over dresses/other pieces. Florals, gingham, frills and embellishments play with hyper femininity.

# KEY FABRIC GRAPHIC SEQUIN



**Talbot Runhof**



**Rahul Mishra**



**Giambattista Valli**



**Delpozo**

Sequin fabrics were spotted featuring print-like patterns and designs, giving them a more graphical feel for Autumn/Winter 2018.